

**Saffron**<sup>®</sup>

*Relay forever...*

**Saffron Power Innovations Pvt.Ltd.**

(An ISO 9001:2015 Certified Company)

4056, Bhandup Industrial Estate, Pannalal Compound,  
L.B.S. Marg, Bhandup (W), Mumbai-400 078.  
E-mail: sales@saffronin.com • Customer Care No.: 8779087339  
Web: www.saffronin.com

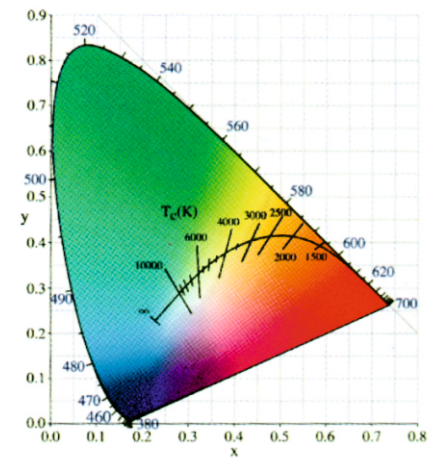
**Saffron**<sup>®</sup>

*Relay forever...*



*Relay forever...*

**Saffron**<sup>®</sup>  
*Relay forever...*



We source high quality of LGP and Diffuser for LED Panel light to achieve optimal performance.

Aluminium metal core PCB along with thermal tape is used to ensure longevity of LED and better performance.

Housing is made from pressure die casting aluminium for superior heat dissipation.

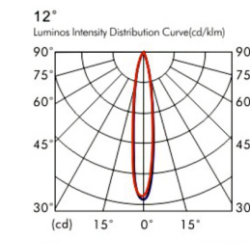
The heatsinks used by us are of proportionate sizes to dissipate the heat generated according to the wattage rating of the LED

Enhance illumination is obtained by the use of UV coated & vacuum metalised reflector in our COB lights.

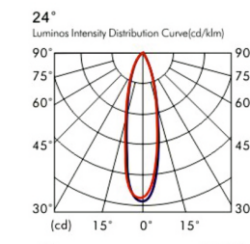
High quality Integrated chips ensures sustained performance of the driver.

**Advantages of LED Technology**

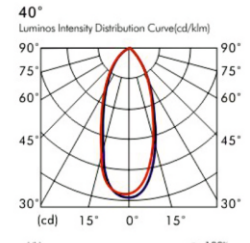
- Sustainable, Green Technology
- High Lumen Efficacy
- Low Energy Consumption
- Long Product Life
- Convenient
- Controlability
- Mercury Free
- UV and IR Radiation Free
- High Colour Rendering Index



H(m)	D(cm)	Evag(Lx)
1	31.65	861.6
2	63.29	215.4
3	94.94	95.7.3
4	126.58	538.5
5	258.23	344.6



H(m)	D(cm)	Evag(Lx)
1	34.62	528.3
2	69.25	132.1
3	103.87	58.7.0
4	138.49	330.2
5	173.11	211.3



H(m)	D(cm)	Evag(Lx)
1	40.65	461.6
2	73.29	105.4
3	124.94	65.7.3
4	156.58	338.5
5	190.23	144.6

Note: Due to constant upgrades Company reserves the right to Change the Models / Size / Specification etc. without prior notice.



Recessed



Model	Power	Dimension	Cut-Out	Depth
<b>SF-1312RF-D</b>	12W	100	90	61
<b>SF-1318RF</b>	18W	130	110	80
<b>SF-1322RF</b>	22W	170	155	90
<b>SF-1340RF</b>	40W	200	180	95

Recessed



Model	Power	Dimension	Cut-Out	Depth
<b>SF-3008RM</b>	8W	85	75	57
<b>SF-3012RM</b>	12W	97	85	71
<b>SF-3020RM</b>	20W	130	115	88
<b>SF-3030RM</b>	30W	158	140	95

Low-dip Recessed



Model	Power	Dimension	Cut-Out	Depth
<b>SF-3510RF</b>	10W	100	75	35
<b>SF-3515RF</b>	15W	120	90	35

□ Light Source : Cree □ Colour temp.: 6500/4000/3000K □ Housing Material : Aluminium □ Body Colour : White □ All measurements in mm.



**Saffron** is an established brand in the LED LIGHTING INDUSTRY manufacturing high quality Panel Lights, COB Lights, Down Lights, Track Lights, Street Lights, Tubelights, Drivers for LED Strip Lights & SMPS.

We take pride to state that our dedicated efforts of past twenty years in the electronic power devices has elevated us amongst the respected names in the electronic product manufacturing industry.

Our expertise lies in the design and development of highly reliable electronic devices and products. Behind our every LED light we guarantee the ROI by assuring optimal performance and reliability by using quality manufacturing processes.

Drivers are the heart of the LED lights. Saffron manufactures all its drivers with superior electronic components. We have well equipped state-of-art facility for research & development and testing.

Our motto 'Customer First'.....

Saffron has embarked on Lean Implementation.

Lean Tools applied- 5S, Kanban, Visual Factory for timely delivery to Customers.

Application of Six Sigma Approach for supply of Quality Products to Customers.

Kaizens – Appetite of team to search for opportunities to improve and stay competitive.

To provide consistent lighting solutions is a commitment by Saffron.....

Recessed



**SF-1304RM**

Power 4W  
Dimension 70  
Cut-Out 55  
Depth 38



**SF-1306RM**

Power 6W  
Dimension 88  
Cut-Out 75  
Depth 45



**SF-1310\* / Eco**

Power 10W  
Dimension MR16TYPE  
Cut-Out -  
Depth 60



**SF-1310RF-A**

Power 10W  
Dimension 100  
Cut-Out 80  
Depth 83



**SF-1310RF-C**

Power 10W  
Dimension 65  
Cut-Out 58  
Depth 80



**SF-1310RM-A\***

Power 10W  
Dimension 90  
Cut-Out 78  
Depth 82



**SF-1310RM-B\***

Power 10W  
Dimension 102  
Cut-Out 90  
Depth 103



**SF-1312RF-E**

Power 12W  
Dimension 81  
Cut-Out 73  
Depth 100



**SF-1315RF**

Power 15W  
Dimension 120  
Cut-Out 100  
Depth 93



**SF-1315RF-A**

Power 15W  
Dimension 120  
Cut-Out 100  
Depth 93



**SF-1315RM-A**

Power 15W  
Dimension 95  
Cut-Out 78  
Depth 100



**SF-1315RM-B**

Power 15W  
Dimension 100  
Cut-Out 87  
Depth 124

Recessed



**SF-1310RM\***

Power 10W  
Dimension 73  
Cut-Out 63  
Depth 65



**SF-1315RM**

Power 15W  
Dimension 139  
Cut-Out 120  
Depth 105



**SF-1325RM**

Power 25W  
Dimension 160  
Cut-Out 140  
Depth 85



**SF-1325RF**

Power 25W  
Dimension 145  
Cut-Out 120  
Depth 75



**SF-1325RF-A**

Power 25W  
Dimension 145  
Cut-Out 120  
Depth 70



**SF-1304SM**

Power 4W  
Dimension 65  
Cut-Out 59  
Depth 42



**SF-1306SM**

Power 6W  
Dimension 83  
Cut-Out 72  
Depth 48



**SF-1310SM\***

Power 10W  
Dimension 73  
Cut-Out 63  
Depth 65



**SF-1310SM-A\***

Power 10W  
Dimension 90  
Cut-Out 78  
Depth 82



**SF-1310SM-B\***

Power 10W  
Dimension 102  
Cut-Out 85  
Depth 103

Recessed

Recessed

COB Series



□ Light Source : Cree □ Colour temp.: 6500/4000/3000K □ Housing Material : Aluminium □ Body Colour : White □ All measurements in mm.

□ \* These items are available in 5W and 12W also.

Recessed



Model	Power	Dimension	Cut-Out
<b>SF-1003S</b>	3W	80X80	68X68
<b>SF-1008S</b>	8W	108X108	97X97
<b>SF-1012S</b>	12W	150X150	130X130
<b>SF-1015S</b>	15W	180X180	165X165
<b>SF-1022S</b>	22W	218X218	200X200

Recessed



Model	Power	Dimension	Cut-Out
<b>SF-1011RE</b>	11W	168X108	155X93
<b>SF-1030RE</b>	30W	295X173	282X160
<b>SF-1030S</b>	30W	300X300	285X285

Saffie Series- Recessed



Model	Power	Dimension	Cut-Out
<b>SAFFIE-1012S</b>	12W	111X111	99X99
<b>SAFFIE-1015S</b>	15W	145X145	135X135

□ Light Source : Osram/ Samsung □ Colour temp.: 6500/4000/3000K □ Housing Material : Aluminium □ Body Colour : White □ All measurements in mm.

Surface



Model	Power	Dimension	Depth
<b>SF-2905</b>	5W	70	45



Model	Power	Dimension	Depth
<b>SF-2910</b>	10W	60	95
<b>SF-2915</b>	15W	70	105
<b>SF-2920</b>	20W	100	130
<b>SF-2930</b>	30W	120	165

Surface (Movable)



Model	Power	Dimension	Length
<b>SF-1407RMS</b>	7W	70	67
<b>SF-1412RMS</b>	12W	90	70



360° Movable

Model	Power	Dimension
<b>SF-4012RM</b>	12W	65X120
<b>SF-4020RM</b>	20W	80X165
<b>SF-4012RMT</b>	12W	65X120X40
<b>SF-4020RMT</b>	20W	80X165X40

COB Series



Surface



**SF-1410**

Power	10W
Dimension	75
Depth	108



**SF-1410-A**

Power	10W
Dimension	76
Depth	100



**SF-1415**

Power	15W
Dimension	96
Depth	114



**SF-1422**

Power	22W
Dimension	100
Depth	120

Surface



**SF-1425**

Power	25W
Dimension	150
Depth	120

Recessed Zoom Type



**SF-1308RM-Z**

Power	8W
Dimension	85
Cut-Out	70
Depth	70



**SF-1315RM-Z**

Power	15W
Dimension	130
Cut-Out	110
Depth	100



**SF-4530RM-Z**

Power	30W
Dimension	165
Cut-Out	145
Depth	135

Track Light



Model	Power	Dimension	Length
<b>SF-2610T</b>	10W	60	100
<b>SF-2612T</b>	12W	60	100
<b>SF-2615T</b>	15W	60	140
<b>SF-2618T</b>	18W	60	140

Track Light



Model	Power	Dimension	Length
<b>SF-2620T</b>	20W	80	140
<b>SF-2625T</b>	25W	80	140
<b>SF-2630T</b>	30W	95	150
<b>SF-2635T</b>	35W	95	150

Track Light



**SF-2010T**

Power	10W
Dimension	65
Length	92



**SF-2018T**

Power	18W
Dimension	95
Length	150



**SF-2030TA**

Power	30W
Dimension	95
Length	132

□ Light Source : Cree □ Colour temp.: 6500/4000/3000K □ Housing Material : Aluminium □ Body Colour : White □ All measurements in mm.

LED Tube Light



Model	Power	Dimension
<b>SF-2510</b>	10W	1FT.
<b>SF-2518</b>	18W	2FT.
<b>SF-2536</b>	36W	4FT.

LED Stricker



**SF-1103RA**

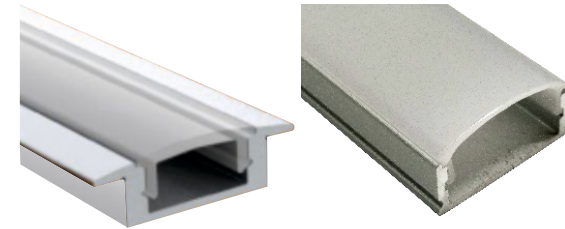
Power	3W
Dimension	60



**SF-1106RA**

Power	6W
Dimension	90

LED Profile Light



Model	Power	Dimension
<b>SF-2404</b>	4W	1FT
<b>SF-2410</b>	10W	2FT
<b>SF-2404S</b>	4W	1FT
<b>SF-2410S</b>	10W	2FT

LED Button Light



**SF-1802-R**

Power	2W
Dimension	40
Cut-Out	28
Depth	27



**SF-1802-S**

Power	2W
Dimension	35X35
Cut-Out	28
Depth	25



**SF-1803-RM**

Power	3W
Dimension	52
Cut-Out	43
Depth	20



**SF-1803-RA**

Power	3W
Dimension	40
Cut-Out	28
Depth	38

Recessed



Model	Power	Dimension	Cut-Out
<b>SF-1003R</b>	3W	80	68
<b>SF-1008R</b>	8W	110	99
<b>SF-1012R</b>	12W	150	130
<b>SF-1015R</b>	15W	180	165
<b>SF-1022R</b>	22W	218	200

Recessed LX Type



Model	Power	Dimension	Cut-Out
<b>SF-1011LX</b>	11W	295X102	282X91
<b>SF-1030LX</b>	30W	510X150	495X135
<b>SF-1040LX</b>	40W	510X222	495X207
<b>SF-1040(4ft.LX)</b>	40W	1220X158	1195X135

Saffie Series- Surface



Model	Power	Dimension	Depth
<b>SF-1108S</b>	8W	86X86	27
<b>SF-1112S</b>	12W	118X118	27
<b>SF-1115S</b>	15W	135X135	25
<b>SF-1122S</b>	22W	183X83	37
<b>SF-1108R</b>	8W	86	27
<b>SF-1112R</b>	12W	118	27
<b>SF-1115R</b>	15W	135	25
<b>SF-1122R</b>	22W	183	37

□ Light Source : Osram/ Samsung □ Colour temp.: 6500/4000/3000K □ Housing Material : Aluminium □ Body Colour : White □ All measurements in mm.

LED Panel Light Series



Down Light Recessed



Model	Power	Dimension	Cut-Out	Depth
<b>SF-1216S</b>	16W	170X170	155X155	53
<b>SF-1222S</b>	22W	170X170	155X155	53

Recessed



Model	Power	Dimension	Cut-Out
<b>SF-2804S</b>	4W	90X90	75X75
<b>SF-2808S</b>	8W	120X120	105X105
<b>SF-2812S</b>	12W	140X140	125X125
<b>SF-2816S</b>	16W	170X170	155X155
<b>SF-2822S</b>	22W	220X220	205X205

Recessed (2x2)



Model	Power	Dimension
<b>SF-1040S</b>	40W	595X595
<b>SF-1048S</b>	48W	595X595

Down Light Recessed



Model	Power	Dimension	Cut-Out	Depth
<b>SF-1216R</b>	16W	180	165	53
<b>SF-1222R</b>	22W	180	165	53

Recessed



Model	Power	Dimension	Cut-Out
<b>SF-2804R</b>	4W	90	75
<b>SF-2808R</b>	8W	120	105
<b>SF-2812R</b>	12W	140	125
<b>SF-2816R</b>	16W	170	155
<b>SF-2822R</b>	22W	220	205

Down Light Recessed



Model	Power	Dimension	Cut-Out
<b>SF-2715R</b>	15W	165	145
<b>SF-2718R</b>	18W	165	145
<b>SF-2722R</b>	22W	195	175
<b>SF-2725R</b>	25W	195	175

□ Light Source : Osram/ Samsung □ Colour temp.: 6500/4000/3000K □ Housing Material : Aluminium □ Body Colour : White □ All measurements in mm.

LED Panel Light Series





LED Street Light



Model	Power
SF-1618A	18W
SF-1630A	30W
SF-1636A	36W
SF-1650	50W
SF-1670	70W
SF-16100	100W

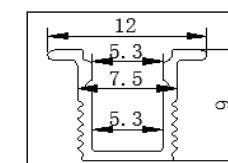
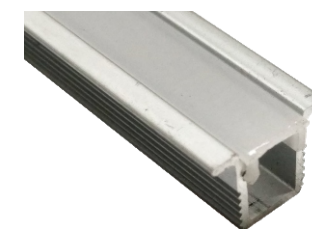
LED Flood Light



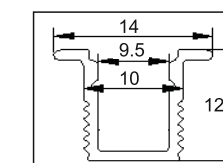
Model	Power
SF-2235	35W
SF-2250	50W
SF-2270	70W
SF-22100	100W
SF-22150	150W

□ Light Source : Osram/ Samsung □ Colour temp.: 6500/4000/3000K □ Housing Material : Aluminium □ Body Colour : White □ All measurements in mm.

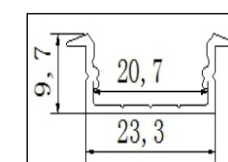
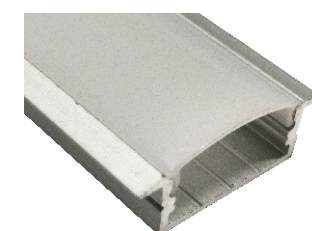
LED Profile Light



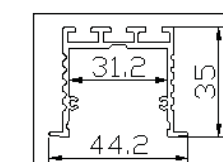
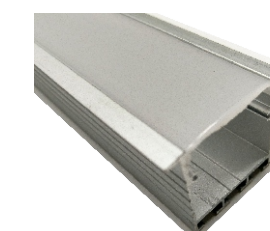
**SF-5001**  
5 mm Conceal



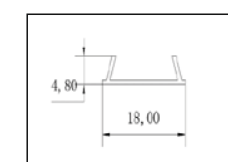
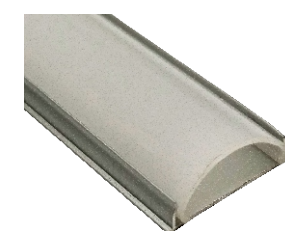
**SF-5002**  
8 mm Conceal



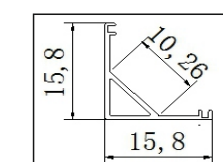
**SF-5003**  
25 mm Conceal



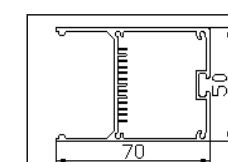
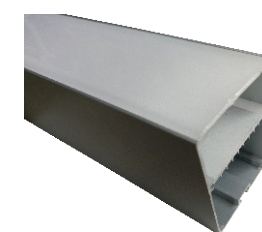
**SF-5004**  
45 mm Conceal



**SF-5005**  
Bendable

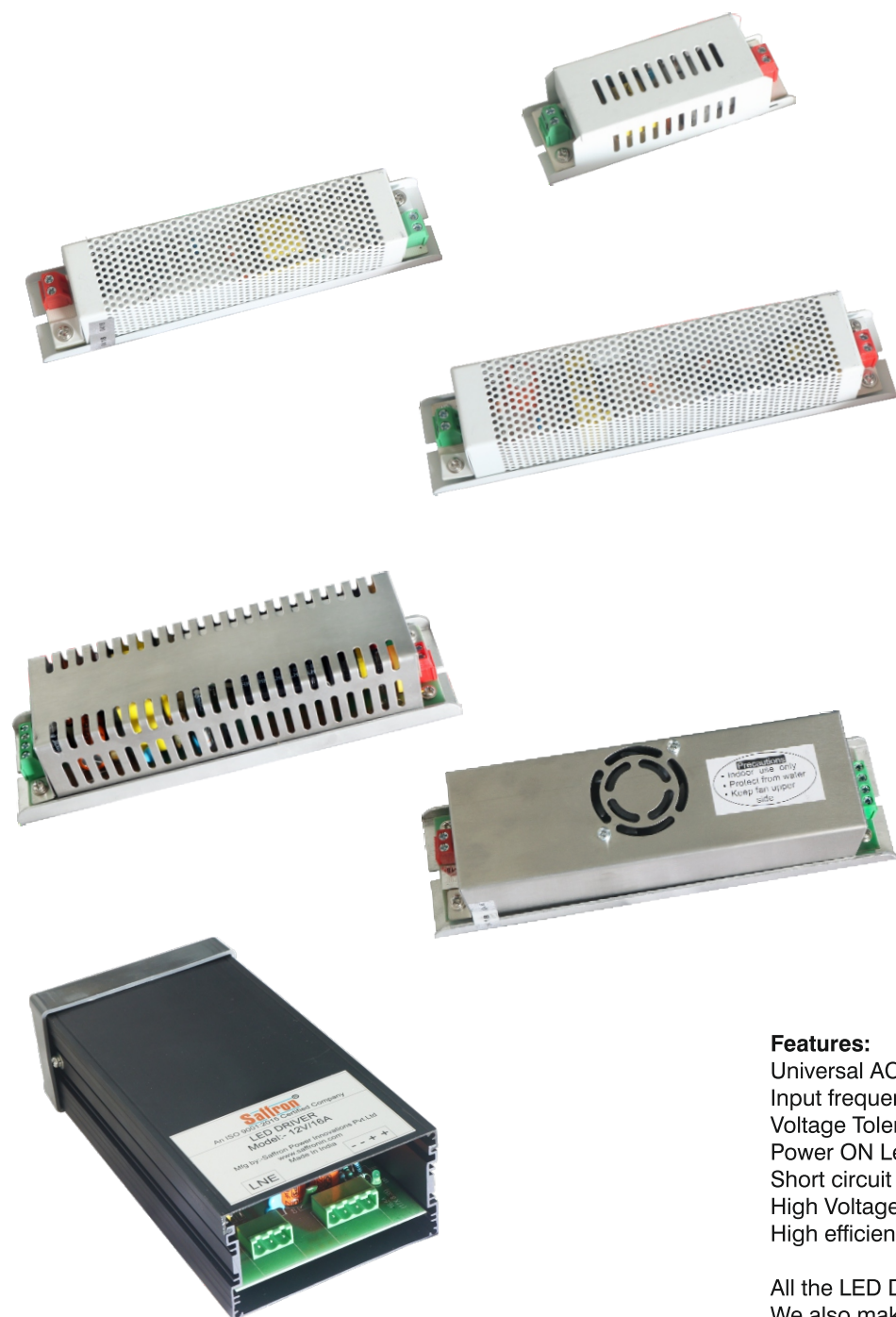


**SF-5006**  
Corner



**SF-5007**  
Box Profile

LED Light



**12V LED Driver**

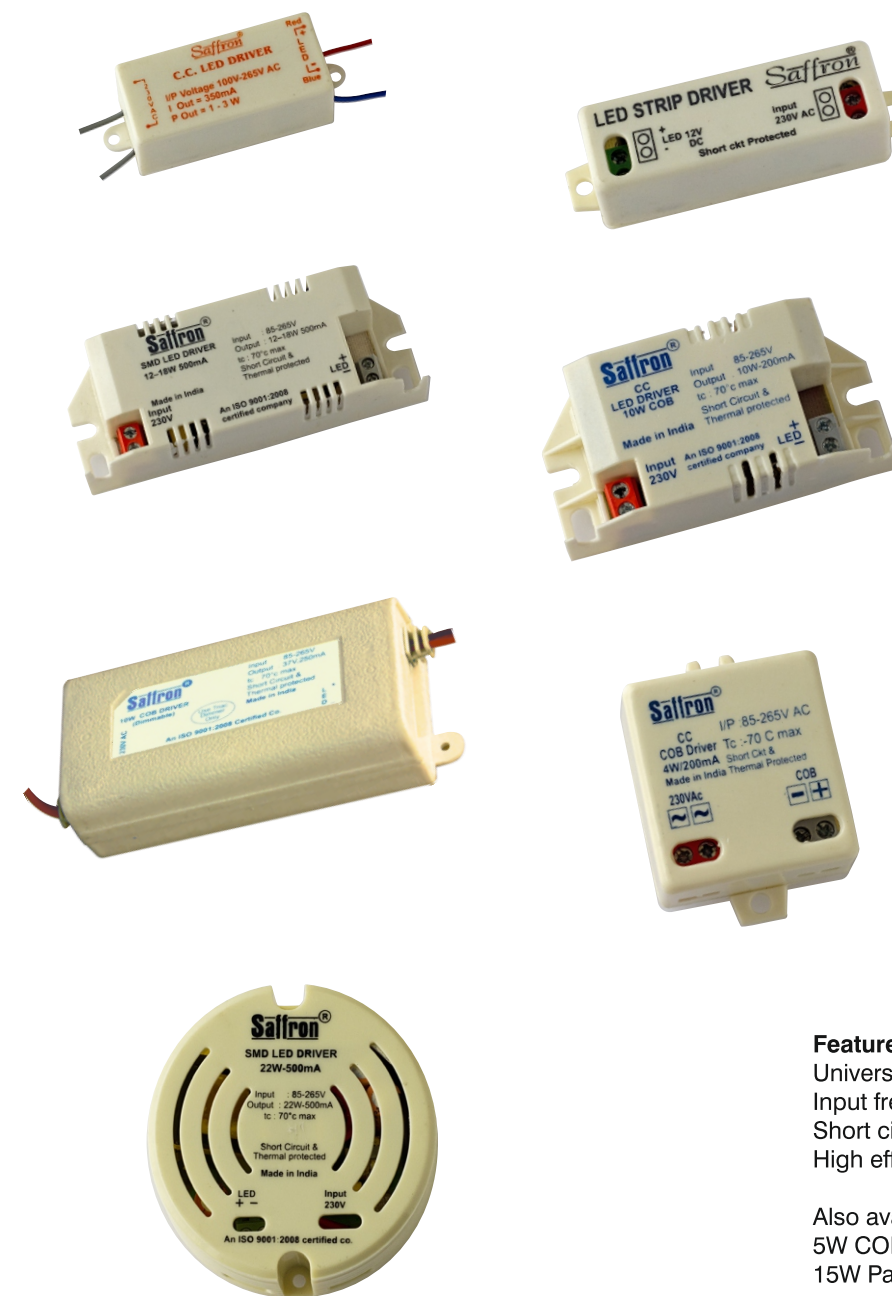
- LED Strip Driver
- RGB Strip Driver
- 12V/1 Amp
- 12V/2 Amp
- 12V/2 Amp Micro
- 12V/3 Amp
- 12V/4 Amp
- 12V/5 Amp
- 12V/6.5 Amp
- 12V/8 Amp
- 12V/10 Amp
- 12V/12 Amp
- 12V/14 Amp
- 12V/16 Amp
- 12V/20 Amp

**24V LED Driver**

- 24V/1 Amp
- 24V/2 Amp
- 24V/2.5 Amp
- 24V/3 Amp
- 24V/4 Amp
- 24V/5 Amp
- 24V/6.5 Amp
- 24V/8 Amp
- 24V/10 Amp

**Features:**  
 Universal AC I/P Voltage range 85V to 265V AC.  
 Input frequency : 50Hz to 60Hz.  
 Voltage Tolerance : 1%.  
 Power ON Led Indicator.  
 Short circuit / Over load / Over voltage protected.  
 High Voltage surge protected.  
 High efficiency & reliability.

All the LED Drivers are 12V/24V Constant Voltage.  
 We also make customised LED Drivers.



**LED Driver**

- RGB LED Driver
- 1W
- 3W
- 6W
- 10W
- 12W
- 16W
- 21W
- 27W
- 35W
- 50W
- 3W Panel Driver
- 8W Panel Driver
- 12/18W Panel Driver
- 22W Panel Driver
- 12/50 Choke
- 36W Conn.
- T5 28W Conn.

**Features:**  
 Universal AC I/P Voltage range 85V to 265V AC.  
 Input frequency : 50Hz to 60Hz.  
 Short circuit / Over load / Over voltage protected.  
 High efficiency & reliability.

Also available Dimmable Driver for  
 5W COB, 10W COB, 25W COB, 12W Panel,  
 15W Panel, 22W Panel.